

**1. Missouri River downstream from Fort Peck Dam**

- Paddlefish snagging:
  - open Tuesdays, Wednesdays, Fridays and Saturdays from May 15 through June 30 from 6 AM to 9 PM (MT) daily, unless closed to harvest earlier by FWP.
  - closed Sundays, Mondays and Thursdays.
- An unused yellow Paddlefish tag is required to fish for Paddlefish. The tag must be properly placed on the first Paddlefish caught and landed.
- Catch-and-release snagging for Paddlefish is not permitted.

**2. Yellowstone River from the mouth of the Bighorn River to Intake Dam (not including Intake Fishing Access Site) and downstream of Intake Fishing Access Site to North Dakota State Line**

- Paddlefish Snagging:
  - open Tuesdays, Wednesdays, Fridays and Saturdays from May 15 through June 30 from 6 AM to 9 PM (MT) daily, unless closed to harvest earlier by FWP.
  - closed Sundays, Mondays and Thursdays.
- An unused yellow Paddlefish tag is required to fish for Paddlefish. The tag must be properly placed on the first Paddlefish caught and landed.
- Catch-and-release snagging for Paddlefish is not permitted.

**3. Intake Fishing Access Site**

- Paddlefish Snagging:
  - open Tuesdays, Wednesdays, Fridays and Saturdays from May 15 through June 30 from 6 AM to 9 PM (MT) daily, unless closed to harvest earlier by FWP.
- An unused yellow Paddlefish tag is required to fish for Paddlefish. The tag must be properly placed on the first Paddlefish caught and landed. It is unlawful to release a Paddlefish except on designated catch-and-release days during the open season for Paddlefish.
- Catch-and-release snagging:
  - open Sundays, Mondays and Thursdays from May 15 through June 30 from 6AM to 9 PM (MT) daily, unless closed earlier by FWP.
- Evidence of a current year yellow Paddlefish tag must be in possession to fish for Paddlefish. All Paddlefish must be released immediately and may not be gaffed or lifted out of the water. Captured fish must remain at least partially submerged in water at all times (to avoid injury to the fish). Following the harvest closure, catch- and-release snagging will be allowed, at Intake Fishing Access Site only, for 10 consecutive days or through June 30, whichever comes first.

**4. Intake Diversion Dam to about 1/4 mile downstream**

- Closed to fishing, snagging or landing Paddlefish from boats/vessels during the open Paddlefish season (i.e. May 15 through June 30 or earlier as posted on site).
- Snagging: It is illegal to snag for fish other than Paddlefish.

**Paddlefish Season Summary by River and River Section**

River	River Section	Tag Color	Season Dates	Harvest Days	C&R Days
Missouri River	Ft Peck Dam to Ft Benton	white	May 1 - Jun 15	all	all
	Ft Peck Dredge Cuts Note: bow & arrow harvest only; snagging not allowed!	blue	July 1 - Aug 31	all - bow & arrow harvest only	none
	Ft Peck Dam to ND Line	yellow	May 15 - Jun 30	Tue,Wed,Fri,Sat	none
Yellowstone River	Big Horn R to Intake Dam	yellow	May 15 - Jun 30	Tue,Wed,Fri,Sat	none
	Intake FAS	yellow	May 15 - Jun 30	Tue,Wed,Fri,Sat	Sun,Mon,Thur
	Downstream of Intake FAS to ND Line	yellow	May 15 - Jun 30	Tue,Wed,Fri,Sat	none

ND = North Dakota      FAS = Fishing Access Site      C&R = Catch and Release



**Montana Fish,  
Wildlife & Parks**

**2017  
Paddlefish Regulations**

All Paddlefish anglers, regardless of age, must purchase the proper prerequisite conservation license, fishing license and Paddlefish tag (see License Requirements in the 2017 Montana Fishing Regulations). All licenses must be in the angler's immediate possession while fishing.

**Daily and Possession Limits and Tags:** 1 Paddlefish per season per angler. Anglers are required to select one of the following areas, and may only fish in the area selected:

- Upper Missouri River, upstream from Fort Peck Dam to Fort Benton - **WHITE TAG**
- Yellowstone River and Missouri River downstream from Fort Peck Dam – **YELLOW TAG**
- Fort Peck Dredge Cuts (west of Park Grove Bridge and Nelson Dredge) on the Missouri River - **BLUE TAG**

**General Paddlefish Regulations for ALL Areas**

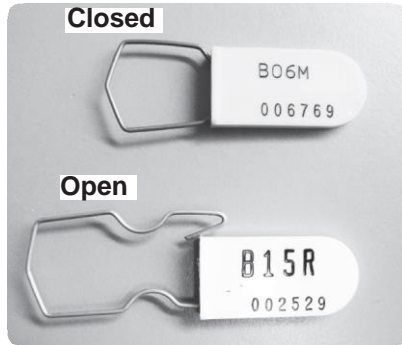
- Anglers harvesting a Paddlefish anywhere in Montana (Yellowstone River, Missouri River or Fort Peck Dredge Cuts) are required to report harvested Paddlefish within 48 hours of harvest.
- Reporting options include: on site where fish was harvested (in some instances FWP will set up check points to assist with reporting), or phone hotline 1-844-668-5932 or 406-444-5604.
- Anglers reporting a harvested Paddlefish will be required to provide the following information: angler tag number, jaw tag number (if present), length (eye to tail fork), sex, date of harvest and harvest location. Additional information that may be collected on-site includes weight and age structure (jaw section).
- Instructions for reporting will be included when the Paddlefish tag is sold.
- Anglers not reporting a harvested Paddlefish will not be eligible to purchase a Paddlefish tag the following year.
- All waters open to angling (except the Ft Peck Dredge Cuts Archery section) are open to snagging Paddlefish during the open Paddlefish season by anglers with a valid tag.
- Snagging non-game fish is allowed on all open waters in the Eastern District except on the Missouri River downstream from Fort Benton to the North Dakota border and on the Yellowstone River downstream from the mouth of the Bighorn River.
- Each angler must cast for, hook and reel in his or her own Paddlefish. It is unlawful for another person to do so. It is illegal to loan tags or use another angler's tag.
- Hook size is limited to 8/0 and smaller for all Paddlefish snagging.
- Gaffs, no longer than 4.5 feet in length, may be used to land a Paddlefish that will be tagged. Gaffs may not be used to land a Paddlefish that will be released.
- Any tag locked shut prior to attachment to a Paddlefish shall be void and is not replaceable. Any altered or modified tag shall be void. **Voided or lost tags are not replaceable.**
- Paddlefish must be tagged immediately upon harvest. All Paddlefish caught during the snag and release season must be released immediately and may not be gaffed or lifted out of the water. Captured fish must remain at least partially submerged in the water at all times to avoid injury to the fish.
- It is unlawful to possess an untagged Paddlefish or part of one. If anglers cut up a Paddlefish, they must keep the part of the back and dorsal fin (back fin) where the tag is attached and sealed to the fish.
- Tags must remain with processed fish until consumption.
- When a Paddlefish is captured and tagged, the fish must be removed from the river by the end of the day (9:00 PM MT).

**TO REPORT FISHERIES VIOLATIONS CALL 1-800-TIP-MONT**

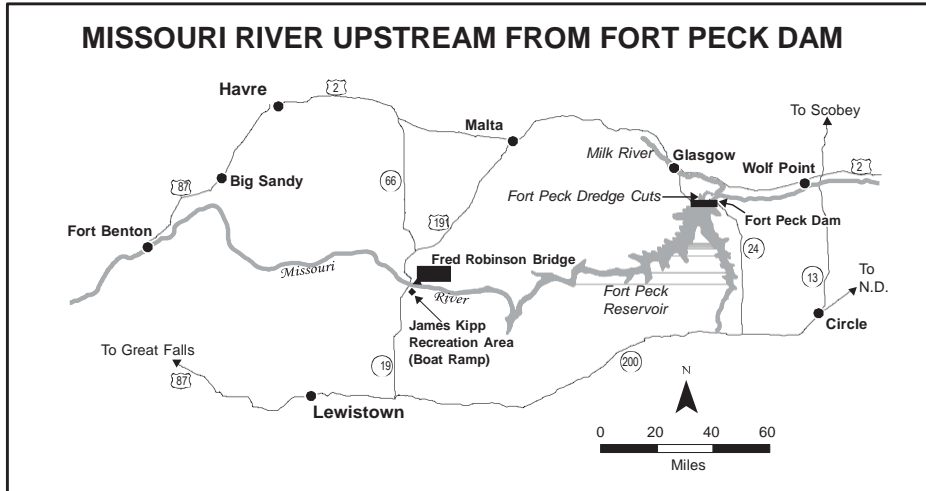
**To Tag a Paddlefish—**

- Cut a small hole in the base of the dorsal fin (see illustration).
- Insert the metal loop portion of the plastic self-locking tag through this hole and seal tag.
- The metal loop must penetrate the fish so as to make the plastic self-locking tag non-removable when tag is sealed.
- The plastic self-locking tag must be completely sealed so it cannot be reopened.

Any fish not tagged in accordance with these instructions shall be considered to be untagged. You must have your conservation and Paddlefish license in your possession to fish for or/and take Paddlefish.



**IMPORTANT:** Do not seal your self-locking tag prior to attachment to fish. They cannot be reopened and will be void if sealed prior to attachment.



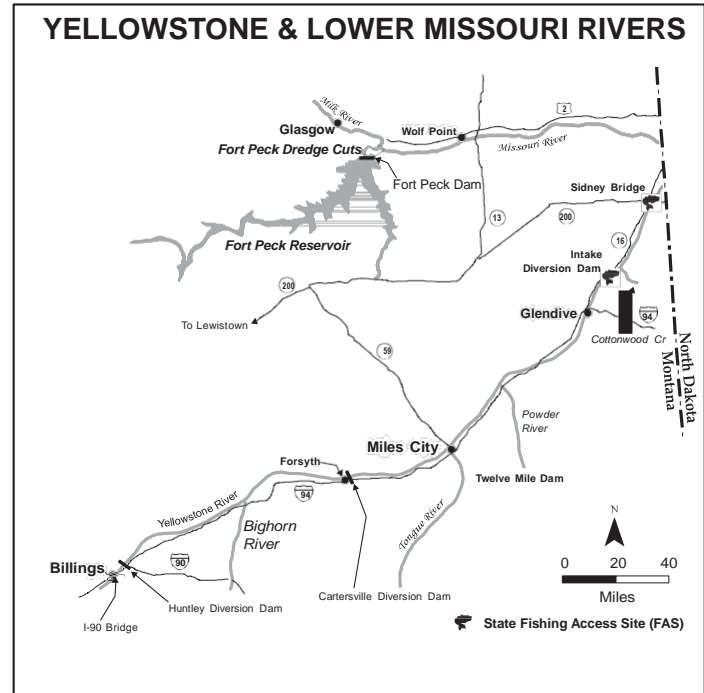
**Missouri River upstream from Fort Peck Dam to Fort Benton - WHITE TAG**

- There will be 1,000 harvest tags allocated in 2017. The season WILL NOT be shortened if more than 500 fish are harvested during the season. The number of tags allocated each year may change to ensure sustainable population management.
- Paddlefish harvest only tags will be available via lottery draw for the Upper Missouri River Paddlefish season (White Tag) only. Anglers need to apply individually or as a party (up to 5 people). Applications can be submitted either online at <http://fwp.mt.gov/>, at an FWP office or mailed. Applications must be **RECEIVED** by 5 pm March 30, 2017.
- Unsuccessful applicants can still snag and release Paddlefish with their Conservation License, Fishing License and Paddlefish catch and release only license.
- Successful applicants will be allowed to fish from May 1<sup>st</sup> through June 15<sup>th</sup> (unless closed earlier by FWP) from 6 AM to 9 PM (MST) daily.

- Catch-and-release snagging for Paddlefish is open from May 1 to June 15. A Paddlefish catch-and-release license is required for catch-and-release fishing. All Paddlefish must be released immediately and may not be gaffed or lifted out of the water. Captured fish must remain at least partially submerged in water at all times (to avoid injury to the fish).

**Fort Peck Dredge Cuts (west of Park Grove Bridge & Nelson Dredge) - BLUE TAG**

- Bow and Arrow: open July 1 through August 31 for Paddlefish. 1 Paddlefish per angler. An unused blue Paddlefish tag is required to fish for Paddlefish.
- Snagging: no snagging allowed, this is an **archery only** season.



**Missouri River downstream from Fort Peck Dam & Yellowstone River - YELLOW TAG**

- The Paddlefish fishery is managed under a harvest target in conjunction with North Dakota. Montana has set regulations so that annual harvest will not exceed 1,000 fish. FWP may close the season within 24 hours notice in any year if it appears the harvest target may be exceeded, and immediately at the Intake FAS and downstream to Cottonwood Creek, when it is estimated that the target has been reached. For current information on harvest status call the Miles City FWP office at 406-234-0900.
- The Montana nonprofit corporation designated to accept Paddlefish egg donations for the caviar market is authorized to transport lawfully taken and tagged Paddlefish donated by the angler in accordance with guidelines developed and implemented through the annual Memorandum of Understanding (MOU). Paddlefish taken on the Yellowstone River between the Burlington Northern Railroad Bridge at Glendive and the North Dakota state line and donated by the angler at the Intake FAS or at the Sidney Bridge FAS are eligible for transport by designated individuals.