

Missouri River downstream from Fort Peck Dam and Yellowstone River from the mouth of the Bighorn River to Intake Dam (not including Intake Fishing Access Site) and downstream of Intake Fishing Access Site to North Dakota State Line (Yellow Tag)

- Paddlefish *Harvest* snagging: **open Tuesdays, Wednesdays, Fridays and Saturdays** from May 15 through June 30 from 6 AM to 9 PM (MST) daily, unless closed earlier by FWP; **closed Sundays, Mondays and Thursdays - catch-and-release snagging for Paddlefish is not permitted in these areas.**
- An unused yellow Paddlefish tag is required to fish for Paddlefish. The tag must be properly placed on the first Paddlefish caught and landed.

Intake Fishing Access Site (Yellow Tag)

- Paddlefish *Harvest* Snagging: **open Tuesdays, Wednesdays, Fridays and Saturdays** from May 15 through June 30 from 6 AM to 9 PM (MST) daily, unless closed to harvest earlier by FWP.
- An unused yellow Paddlefish tag is required to fish for Paddlefish. The tag must be properly placed on the first Paddlefish caught and landed. It is unlawful to release a Paddlefish except on designated catch-and-release days during the open season for Paddlefish.
- **Paddlefish** Catch-and-release snagging: **open Sundays, Mondays and Thursdays** from May 15 through June 30 from 6 AM to 9 PM (MST) daily, unless closed earlier by FWP.
- **FWP will announce closure of the harvest season** with a 24 hour notice **to prevent exceeding the 1,000 fish harvest target**, and immediately at the Intake FAS and downstream to Cottonwood Creek, when it is estimated that the target will be reached. Following the harvest closure, catch-and-release snagging will be allowed, at Intake Fishing Access Site **only**, for 10 consecutive calendar days or through June 30, whichever comes first.
- Evidence of a current year yellow Paddlefish tag must be in possession to catch-and-release snag for Paddlefish. All Paddlefish must be released immediately and may not be gaffed or lifted out of the water. Captured fish must remain at least partially submerged in water at all times (to avoid injury to the fish).

Intake Diversion Dam to 1/4 mile downstream (Yellow Tag)

- **Closed to fishing, snagging or landing paddlefish from boats/vessels during the open paddlefish season (i.e. May 15 through June 30 or earlier as posted on site).**

Paddlefish Season Summary by River and River Section

River	River Section	Color	Season Dates	Harvest Days	C&R Days
Missouri River	Ft Peck Dam to Ft Benton	white	May 1 - Jun 15	all	all
	Ft Peck Dredge Cuts - no snagging	blue	July 1 - Aug 31	all - bow & arrow harvest only	none
	Ft Peck Dam to ND Line	yellow	May 15 - Jun 30	Tue,Wed,Fri,Sat	none
Yellowstone River	Big Horn R to Intake Dam	yellow	May 15 - Jun 30	Tue,Wed,Fri,Sat	none
	Intake FAS	yellow	May 15 - Jun 30	Tue,Wed,Fri,Sat	Sun, Mon,Thur
	Downstream of Intake FAS to ND Line	yellow	May 15 - Jun 30	Tue,Wed,Fri,Sat	none
FAS = Fishing Access Site		C&R = Catch-and-release			



Special Paddlefish Regulations

All Paddlefish anglers must purchase a paddlefish tag, a conservation license, and the required fishing license (see License Requirements pages 4-5 in the 2018 Montana Fishing Regulations). All licenses must be in the angler's immediate possession while fishing.

Daily and Possession Limits and Tags: 1 Paddlefish per season per angler. Anglers may select only one of the following areas, and may only fish in the area selected:

- Upper Missouri River, upstream from Fort Peck Dam to Fort Benton - **White Tag**
- Fort Peck Dredge Cuts (west of Park Grove Bridge and Nelson Dredge) on the Missouri River - **Blue Tag**
- Yellowstone River and Missouri River downstream from Fort Peck Dam - **Yellow Tag**

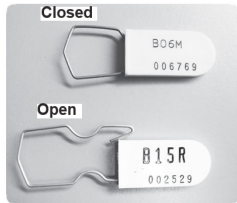
General Paddlefish Regulations for ALL Areas

- It is unlawful for an individual to sell any portion of a Paddlefish including eggs (processed or unprocessed) as prescribed by the F&W Commission.
- Anglers harvesting a Paddlefish anywhere in Montana (Yellowstone River, Missouri River or Ft Peck Dredge Cuts) are required to report harvested Paddlefish within 48 hours of harvest.
- Reporting options include: on-site where fish was harvested (in some instances fisheries staff will be available to assist with reporting), phone hotline (1-844-668-5932 or 406-444-5604).
- Anglers reporting a harvested Paddlefish will be required to provide the following information: Angler tag number, jaw tag number (if present), length (eye-tail fork), sex, date of harvest and harvest location. Additional information that may be collected on-site includes: weight and age structure (jaw section).
- Instructions for reporting will be included when the Paddlefish tag is sold.
- Anglers not reporting a harvested Paddlefish will not be eligible to purchase a Paddlefish tag the following year.
- All waters open to angling are open to snagging Paddlefish during the open Paddlefish season by anglers with a valid tag, **except** the Ft Peck Dredge Cuts Archery section.
- Snagging non-game fish is allowed on all open waters in the Eastern District **except** on the Missouri River downstream from Fort Benton to the North Dakota border and on the Yellowstone River downstream from the mouth of the Bighorn River.
- Each angler must cast for, hook and reel in his or her own Paddlefish. It is unlawful for another person to do so. It is illegal to loan tags or use another angler's tag.
- Hook size is limited to 8/0 and smaller for all Paddlefish snagging.
- Gaffs, no longer than 4.5 feet in length, may be used to land a Paddlefish that will be tagged. Gaffs may not be used to land a Paddlefish that will be released.
- Any tag locked shut prior to attachment to a Paddlefish shall be void and is not replaceable. Any altered or modified tag shall be void. **Voided or lost tags are not replaceable.**
- Paddlefish must be tagged immediately upon harvest.
- It is unlawful to possess an untagged Paddlefish or part of one. If anglers cut up a Paddlefish, they must keep the part of the **fish** back and dorsal fin (back fin) where the tag is attached and sealed to the fish.
- Tags must remain with processed fish until consumption.
- When a Paddlefish is captured and tagged, the fish must be removed from the river by the end of the day (9:00 PM, MST).

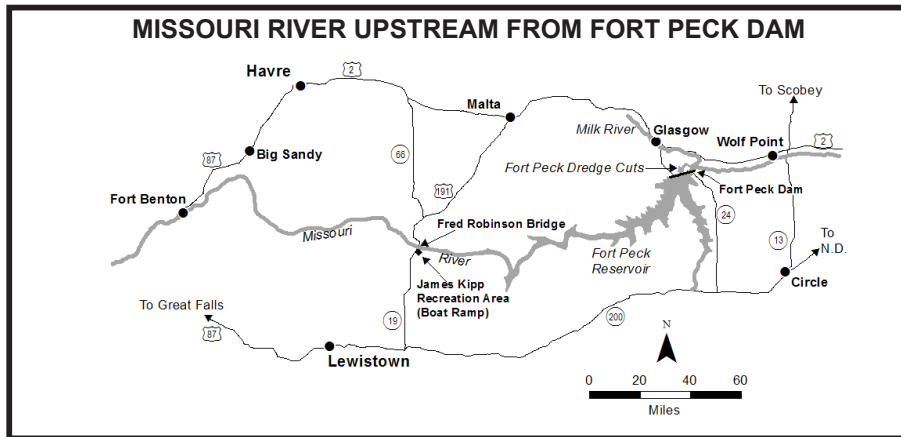
TO REPORT FISHERIES VIOLATIONS CALL 1-800-TIP-MONT

Tagging a Paddlefish

- Cut a small hole in the base of the dorsal fin.
- Insert the metal loop portion of the plastic self-locking tag through this hole and seal tag.
- The metal loop must penetrate the fish so as to make the plastic self-locking tag non-removable when tag is sealed.
- The plastic self-locking tag must be completely sealed so it cannot be reopened
- Any fish not tagged in accordance with these instructions shall be considered to be untagged. You must have your conservation and Paddlefish license in your possession to fish for or/ and take Paddlefish.



Important: Do not seal your self-locking tag prior to attachment to fish. They cannot be reopened and will be void if sealed prior to attachment.



Missouri River upstream from Fort Peck Dam to Fort Benton (White Tag)

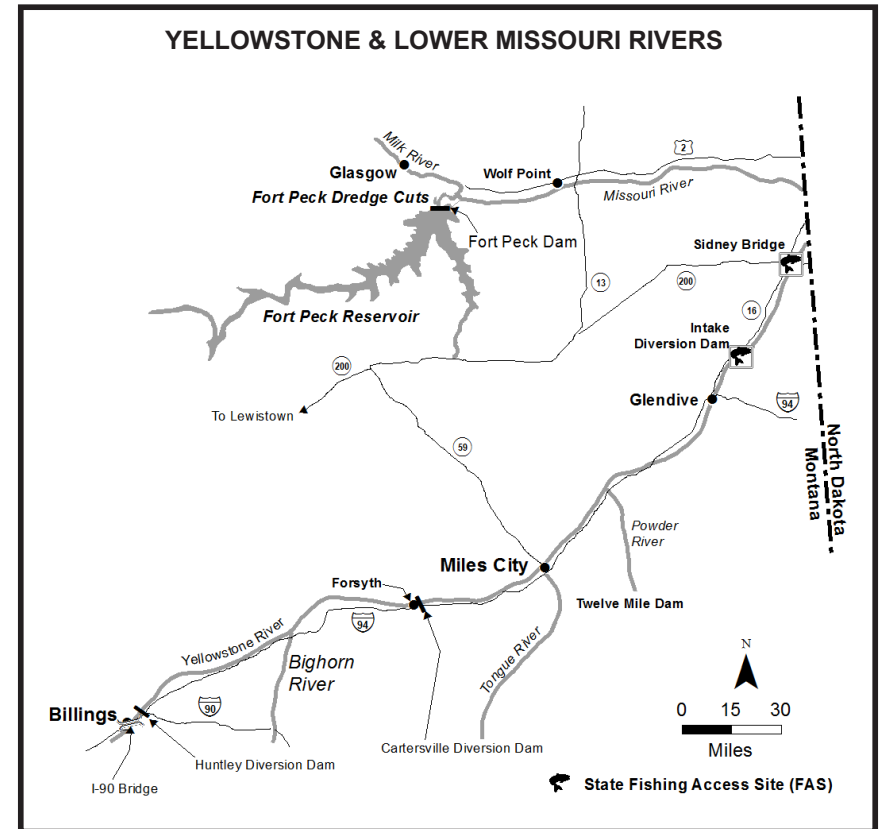
The Paddlefish fishery is managed so that an annual harvest will not exceed 500 fish. Paddlefish harvest only tags will be available via lottery draw for the Upper Missouri River Paddlefish season (White Tag) only. Anglers need to apply individually or as a party (up to five people). Applications can be submitted either on-line at <http://fwp.mt.gov>, at an FWP office (see page 1 for addresses) or mailed.

- Applications must be received by FWP no later than 5:00pm March 29, 2018.
- Unsuccessful applicants can still catch-and-release Paddlefish with their Conservation License, Fishing License, and Paddlefish tag. Successful applicants will be allowed to fish from May 1 to June 15. Harvested Paddlefish must be immediately tagged and reported within 48 hours (phone hotline 1-844-668-5932 or 406-444-5604).
- All Paddlefish caught during the catch-and-release season must be released immediately and may not be gaffed or lifted out of the water. Captured fish must remain at least partially submerged in water at all times (to avoid injury to the fish).
- Paddlefish anglers can participate in only one Paddlefish season per year. For example, if an angler is unsuccessful in drawing a Paddlefish tag for the Upper Missouri River Paddlefish season (White Tag) he/she cannot purchase a tag to fish the Yellowstone River Paddlefish season (Yellow Tag).
- Paddlefish snagging: open to harvesting Paddlefish from May 1 to June 15 from 6 AM to 9 PM (MST) daily.

- Catch-and-release snagging for Paddlefish is open from May 1 to June 15. Proof of purchase of a white Paddlefish tag on your fishing license is required for catch-and-release fishing. All Paddlefish must be released immediately and may not be gaffed or lifted out of the water. Captured fish must remain at least partially submerged in water at all times (to avoid injury to the fish).

Fort Peck Dredge Cuts (west of Park Grove Bridge and Nelson Dredge) (Blue Tag)

- Bow and Arrow: open July 1 through August 31 for Paddlefish. 1 Paddlefish per angler. An unused blue Paddlefish tag is required to fish for Paddlefish.
- Snagging: no snagging allowed, this is an archery only season.



Yellowstone River and Missouri River downstream from Fort Peck Dam (Yellow Tag)

- The Paddlefish fishery is managed under a harvest target so annual harvest will not exceed 1,000 fish. FWP **will announce closure of the harvest** season with a 24 hour notice to **prevent exceeding the harvest target**, and immediately at the Intake FAS and downstream to Cottonwood Creek, when it is estimated that the target will be reached. For current information on harvest status call the Miles City FWP office at 406 234-0900.
- The Montana nonprofit corporation designated to accept Paddlefish egg donations **in exchange for a free fish cleaning service**, in accordance with guidelines developed and implemented through the annual Memorandum of Understanding, is authorized to accept and transport lawfully taken and tagged Paddlefish donated by the angler. Paddlefish **harvested** on the Yellowstone River between the Burlington Northern Railroad Bridge at Glendive and the North Dakota state line are eligible **for donation to the cleaning station at Intake FAS**.